

The Plant Disease Clinic and Weed Identification Lab Annual Report 2005



**Department of Plant Pathology, Physiology, and Weed Science
Virginia Polytechnic Institute and State University
Blacksburg, Virginia**

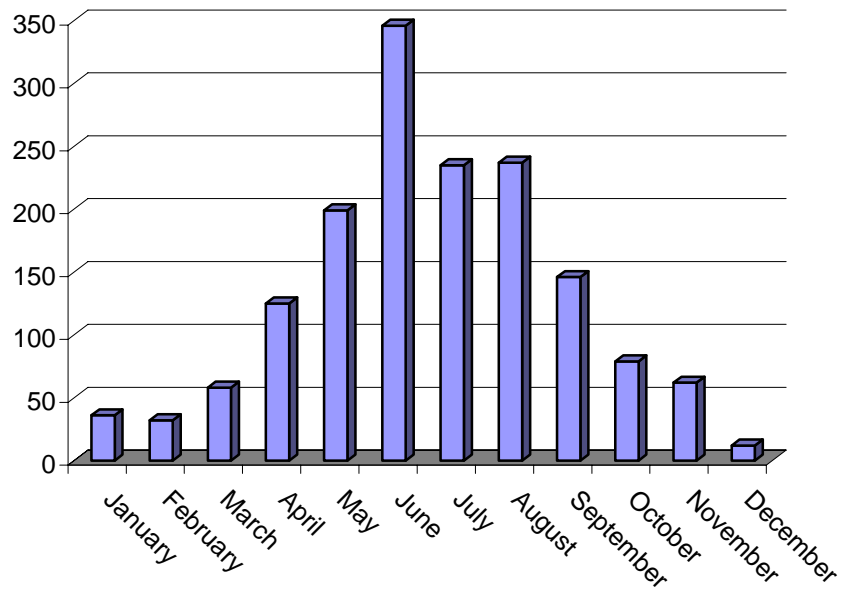
Plant Disease Clinic

Monthly Submission Summary

Number of samples received by month

Month	# Samples
2005	
January	36
February	32
March	58
April	125
May	199
June	346
July	235
August	237
September	146
October	79
November	62
December	12
Total for 2005	1,567
Grand Total	1,567

Number of Samples by Month



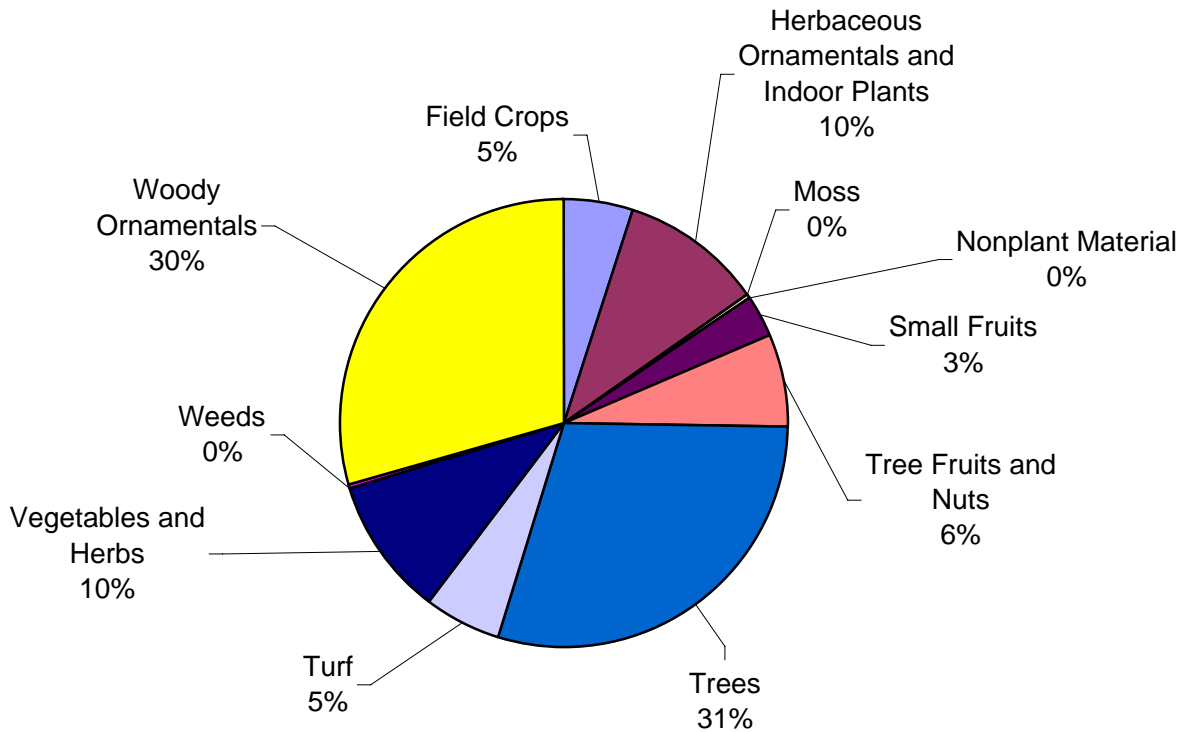
Plant Disease Clinic

Crop Category Summary

Sample totals by major crop categories

Crop Category	# of Samples	% of Total
Field Crops	77	5.1
Herbaceous Ornamentals and Indoor Plants	156	10.3
Moss	1	0.1
Nonplant Material	1	0.1
Small Fruits	47	3.1
Tree Fruits and Nuts	98	6.5
Trees	449	29.6
Turf	83	5.5
Vegetables and Herbs	154	10.2
Weeds	1	0.1
Woody Ornamentals	448	29.6
Total	1,515	

Samples by Crop Category



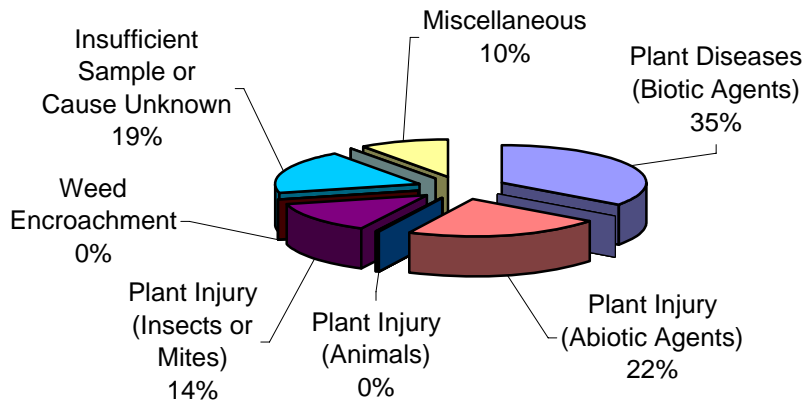
Plant Disease Clinic

Diagnosis Category Summary

Distribution of diagnoses by major diagnostic categories

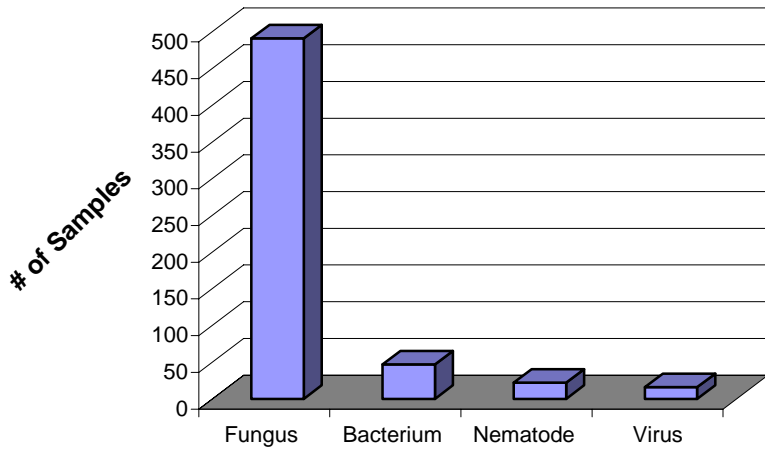
	# of Diagnoses/IDs	% of Total
Plant Diseases - Biotic Agents	576	33.9
Bacterium (47)		
Fungus (491)		
Nematode (22)		
Virus (16)		
Plant Injury - Abiotic Agents	365	21.5
Chemical (76)		
Environmental/Cultural (282)		
Mechanical (7)		
Plant Injury - Animals	6	0.4
Birds (4)		
Mammals (2)		
Plant Injury - Insects or Mites	223	13.1
Insects or Mites (223)		
Weed Encroachment	2	0.1
Weed (2)		
Insufficient Sample or Cause Unknown	309	18.2
Insufficient sample or information (294)		
Unknown (15)		
Miscellaneous	166	9.8
Algae (3)		
Lichen (8)		
Normal Condition (9)		
Other (107)		
Physiological/Genetic (39)		
Total	1698	100

2005 Samples by Diagnostic Category



Plant Disease Clinic

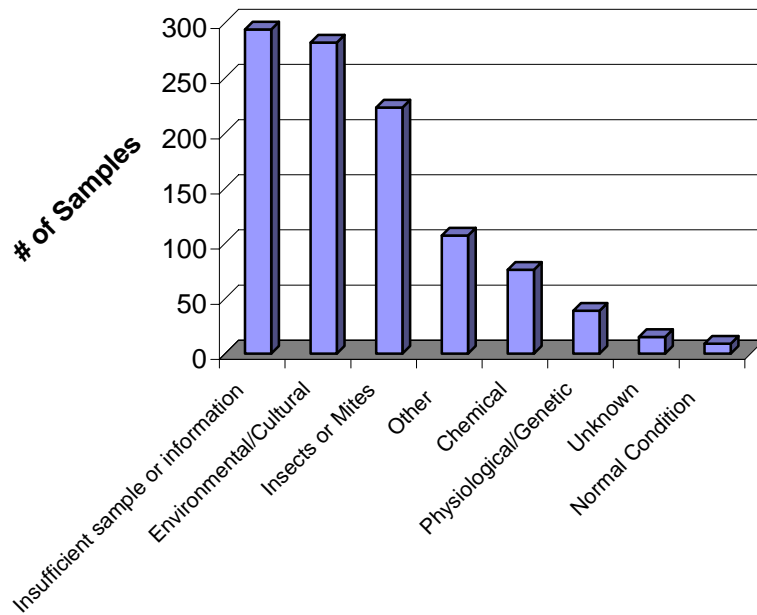
Plant Pathogens 2005



Other Assistance, 2005

Type	# of Inquiries
E-mail	56
Digital Images	24
Phone Calls	132

Other Agents 2005



Plant Disease Clinic
Distribution of Samples by County, 2005

County	# of Samples	County	# of Samples
Accomack	8	Lancaster	6
Albemarle	95	Lee	9
Alleghany	2	Loudoun	25
Amelia	3	Louisa	41
Amherst	3	Lunenburg	15
Appomattox	2	Lynchburg (IC)	15
Arlington	13	Madison	6
Augusta	25	Mathews	5
Bath	6	Mecklenburg	8
Bedford	8	Middlesex	12
Bland	3	Montgomery	115
Botetourt	9	Nelson	55
Brunswick	1	New Kent	3
Buckingham	8	Newport News (IC)	9
Campbell	4	Norfolk (IC)	9
Caroline	2	Northumberland	19
Carroll	20	Nottoway	4
Charles (IC)	3	Orange	15
Charlotte	1	Page	4
Chesapeake (IC)	49	Patrick	18
Chesterfield	2	Pittsylvania	26
Clarke	6	Portsmouth (IC)	3
Craig	4	Powhatan	13
Culpeper	4	Prince Edward	5
Cumberland	7	Prince George	30
Danville (IC)	24	Prince William	3
Dickenson	8	Pulaski	16
Dinwiddie	7	Radford (IC)	1
Essex	4	Rappahannock	7
Fairfax	18	Roanoke	60
Fauquier	26	Rockbridge	11
Floyd	12	Rockingham	27
Fluvanna	4	Russell	2
Franklin	7	Scott	13
Frederick	16	Shenandoah	9
Giles	19	Smyth	5
Gloucester	6	Spotsylvania	23
Goochland	11	Stafford	63
Grayson	13	Suffolk (IC)	9
Greene	41	Surry	2
Halifax	2	Sussex	4
Hampton (IC)	15	Tazewell	4
Hanover	18	Virginia Beach (IC)	16
Henrico	37	Warren	9
Henry	11	Washington	34
Highland	6	Westmoreland	20
Isle of Wight	3	Wise	16
James City	83	Wythe	3
King George	18	York	42
King William	1	Total	1,567

**Plant Disease Clinic
Monthly Submission Summary**

Number of samples received by month

Month	# Samples
2005	
January	7
February	10
March	8
April	33
May	52
June	45
July	30
August	70
September	46
October	27
November	13
December	5
Total for 2005	346
Grand Total	346

Crop Category Summary

Sample totals by major crop categories

Crop Category	# of Samples
Apples	1
Aquatic	35
Asparagus	1
Buckwheat and partridgepea	3
Clover	1
Corn	6
Flower Garden	3
Garden	10
Hay	17
Lawn	6
N/A	21
Ornamental Bed	24
Pasture	82
Roadside	2
Sorghum	1
Soybeans	4
Stale Seedbed	1
Tobacco	1
Tree	12
Turf	96
Utility Area	16
Wheat	1
White Clover	1
Wildlife Plot	1
Total	346

Plant Disease Clinic
Distribution of Samples by County, 2005

County	# of Samples	County	# of Samples
Accomack	1	Mathews	1
Albemarle	7	Mecklenburg	1
Amelia	1	Montgomery	8
Amherst	1	Nottoway	1
Arlington	1	Page	2
Augusta	5	Patrick	7
Bath	3	Pittsylvania	9
Bland	2	Powhatan	4
Botetourt	2	Prince Edward	2
Buckingham	4	Prince George	1
Campbell	1	Prince William	8
Chesapeake (IC)	5	Pulaski	7
Chesterfield	1	Rappahanock	14
Craig	1	Richmond	1
Culpepper	2	Richmond (IC)	1
Cumberland	2	Roanoke	12
Danville	2	Rockbridge	3
Dickenson	9	Rockingham	4
Dinnwiddle	5	Russell	2
Essex	5	Scott	2
Fauquier	2	Shenandoah	7
Floyd	1	Smyth	1
Fluvanna	1	SPAREC	4
Franklin	4	Spotsylvania	13
Frederick	6	Stafford	2
Giles	15	Suffolk (IC)	2
Gloucester	1	Tazwell	8
Goochland	14	Virginia Beach (IC)	1
Greene	16	Warren	3
Hampton (IC)	5	Washington	9
Hanover	3	Westmoreland	7
Henrico	2	Wise	6
Henry	1	Wythe	1
Highland	1	York	8
Isle of Wight	2	Out-of-State	2
James City	9	Total	344
King George	2		
Lee	5		
Loudon	4		
Louisa	5		
Lunenburg	2		
Lynchburg	19		

Plant Disease Clinic

Diagnosis Appendix

Information about diseases/pests diagnosed by the laboratory

Field Crops

Alfalfa

- 1 Boron Deficiency
- 1 Negative for Disease

2 Total for Alfalfa

Barley

- 1 Leaf Rust *Puccinia hordei*
- 1 Negative for Barley Yellow Dwarf Virus
- 1 Negative for Scab
- 1 Net Blotch *Pyrenophora teres*
- 2 Physiological Leaf Spot

6 Total for Barley

Clover

- 1 Positive for Rhizoctonia *Rhizoctonia sp.*
- 1 Sclerotinia Crown and Root Rot *Sclerotinia trifoliorum*

2 Total for Clover

Corn

- 1 Chemical Injury
- 2 Cultural Problem
- 1 Diplodia Ear Rot *Stenocarpella maydis*
- 1 Environmental Stress
- 2 Low pH
- 1 Nutrient Deficiency
- 1 Seed Corn Maggot
- 1 Southern Corn Leaf Blight *Bipolaris maydis*

10 Total for Corn

Fescue

- 1 Cultural Problem
- 1 Insufficient Sample

2 Total for Fescue

Orchardgrass

- 3 Anthracnose *Colletotrichum graminicola*
- 2 Environmental Stress
- 1 Insufficient Sample
- 3 Leaf Streak *Cercosporidium graminis*
- 3 Rhizoctonia Blight *Rhizoctonia solani*
- 1 Stagonospora Leaf Blotch *Stagonospora arenaria*

13 Total for Orchardgrass

Plant Disease Clinic

Smooth Brome

- 1 Cause of Problem Unknown
- 1 Total for Smooth Brome**

Sorghum

- 1 Physiological Leaf Spots
- 1 Total for Sorghum**

Soybean

- 1 Abiotic Problem
- 1 Alternaria Leaf spot *Alternaria sp.*
- 6 Brown Spot *Septoria glycines*
- 1 Cercospora Blight *Cercospora sp.*
- 3 Downy Mildew *Peronospora manshurica*
- 2 Frogeye Leaf Spot *Cercospora sojina*
- 1 Insect
- 2 Insufficient Sample
- 4 Mites
- 1 Negative for Disease
- 1 Negative for Root Disease
- 24 Negative for Soybean Rust
- 1 Pod and Stem Blight *Phomopsis sp.*
- 1 Powdery Mildew *Microsphaera diffusa*
- 1 Roundup Injury on Roundup Ready Soybean
- 1 Suspect Chemical Injury
- 1 Suspect Improper pH
- 5 Thrips
- 1 Whiteflies
- 58 Total for Soybean**

Tobacco

- 1 Botrytis Blight *Botrytis cinerea*
- 1 Suspect Manganese Toxicity
- 2 Total for Tobacco**

Wheat

- 1 High pH
- 3 Insufficient Sample
- 1 Low pH
- 1 Normal Condition
- 2 Soilborne Wheat Mosaic Virus
- 1 Suspect Barley Yellow Dwarf Virus
- 1 Suspect Environmental Stress
- 2 Suspect Soilborne Mosaic Virus
- 1 Tan Spot *Pyrenophora tritici-repentis*
- 13 Total for Wheat**

Plant Disease Clinic

Herbaceous Ornamentals and Indoor Plants

Ageratum

1 Environmental Stress

1 Total for Ageratum

Aloe

1 Borers

1 Total for Aloe

Amaryllis

1 Mites

1 Total for Amaryllis

Aster

1 Physiological Problem

1 Total for Aster

Balloon Flower

1 Suspect Chemical Injury

1 Total for Balloon Flower

Bedding Plants, Miscellaneous

1 High pH

1 Low soluble salts

2 Total for Bedding Plants, Miscellaneous

Begonia

1 Botrytis Blight

Botrytis cinerea

1 Powdery Mildew

Oidium begoniae

1 Soluble Salts High

3 Total for Begonia

Bergenia

1 Penicillium Leaf Spot

Penicillium sp.

1 Total for Bergenia

Black-eyed Susan

1 Insect

1 Spider Mites

2 Total for Black-eyed Susan

Bleeding Heart

1 Insufficient Sample

1 Total for Bleeding Heart

Calamint

1 Phytophthora Root Rot

Phytophthora sp.

1 Total for Calamint

Plant Disease Clinic

Calathea

1 Mites

1 Total for Calathea

Candytuft

1 Pseudomonas Tip Blight

Pseudomonas viridiflava

1 Total for Candytuft

Celosia

1 Environmental Stress

1 Total for Celosia

Chrysanthemum

1 Bacterial Leaf Spot

Pseudomonas cichorii

1 High pH

1 Insects

1 Leafminers

1 Low pH

4 Pythium Root Rot

Pythium sp.

1 Soluble Salts High

1 Suspect Soluble Salts Injury

11 Total for Chrysanthemum

Clematis

1 Insufficient Sample

1 Scorch

2 Total for Clematis

Cleome

1 Negative for Disease

1 Total for Cleome

Coleus

1 Cold Injury

1 Downy Mildew

Peronospora sp.

1 Suspect Low pH

3 Total for Coleus

Coneflower

1 Chemical Injury

1 Insect

2 Insufficient Sample

1 Physiological Leaf Spot

5 Total for Coneflower

Coral Bells

1 Pythium Root Rot

Pythium sp.

1 Total for Coral Bells

Plant Disease Clinic

Coreopsis

- 1 No Disease Found
 - 1 Web Blight *Rhizoctonia solani*
- 2 Total for Coreopsis**

Dahlia

- 1 Suspect Chemical Injury
- 1 Total for Dahlia**

Daisy

- 1 Insufficient Sample
 - 1 Negative for Virus
 - 1 Phytophthora Root Rot *Phytophthora sp.*
- 3 Total for Daisy**

Daylily

- 5 Leaf Streak *Aureobasidium microstictum*
 - 1 Suspect Chemical Injury
- 6 Total for Daylily**

Dracaena

- 1 Suspect Chemical Injury
- 1 Total for Dracaena**

Easter Cactus

- 1 Pythium Root Rot *Pythium sp.*
- 1 Total for Easter Cactus**

Elderberry

- 1 Insufficient Sample
- 1 Total for Elderberry**

Fern

- 1 Insects
 - 1 Suspect Environmental Stress
- 2 Total for Fern**

Flowering Maple

- 1 Chemical Injury
 - 1 Insufficient Sample
- 2 Total for Flowering Maple**

Forget-me-not

- 1 Insects
- 1 Total for Forget-me-not**

Fuchsia

- 1 Air Pollution
- 1 Total for Fuchsia**

Plant Disease Clinic

Gardenia

1 Bacterial Leaf Spot	<i>Xanthomonas campestris</i>
1 Chemical Injury	
1 Cultural Problem	
4 Insufficient Sample	
1 Phoma Leaf Spot	<i>Phoma sp.</i>
8 Total for Gardenia	

Geranium

1 Botrytis Blight	<i>Botrytis cinerea</i>
1 Low pH	
1 Pythium Root Rot	<i>Pythium sp.</i>
1 Scales	
1 Suspect Environmental Stress	
5 Total for Geranium	

Gladiolus

1 Insects	
1 Total for Gladiolus	

Heliotrope

1 Environmental Stress	
1 Total for Heliotrope	

Hosta

1 Anthracnose	<i>Colletotrichum sp.</i>
2 Hosta Virus X	
1 Negative for Virus	
1 Soft Rot	<i>Erwinia carotovora</i>
2 Southern Blight	<i>Sclerotium rolfsii</i>
7 Total for Hosta	

Impatiens

1 Impatiens Necrotic Spot Virus	
1 Pythium Stem Rot	<i>Pythium sp.</i>
1 Suspect Physiological Problem	
3 Total for Impatiens	

Iris

2 Bacterial Soft Rot	<i>Erwinia sp.</i>
2 Borers	
1 Cause of Problem Unknown	
2 Heterosporium Leaf Spot	<i>Heterosporium iridis</i>
1 Rhizoctonia Root Rot	<i>Rhizoctonia solani</i>
8 Total for Iris	

Jack-in-the-pulpit

1 Rust	<i>Uromyces avi-triphylli</i>
1 Total for Jack-in-the-pulpit	

Plant Disease Clinic

Lamb's Ears

- 1 Insects
- 1 Total for Lamb's Ears**

Lavender

- 1 Phytophthora Root Rot *Phytophthora parasitica*
- 1 Total for Lavender**

Lemon, Meyer

- 1 Suspect Cultural Problem
- 1 Total for Lemon, Meyer**

Madagascar Periwinkle

- 1 Botrytis Blight *Botrytis cinerea*
- 3 Phytophthora Blight *Phytophthora parasitica*
- 1 Rhizoctonia Web Blight *Rhizoctonia sp.*
- 5 Total for Madagascar Periwinkle**

Monkshood

- 1 Rhizoctonia Stem and Root Rot *Rhizoctonia sp.*
- 1 Total for Monkshood**

Orchid

- 1 Artillery Fungus *Sphaerobolus stellatus*
- 1 Mesophyll Cell Collapse
- 2 Total for Orchid**

Pachysandra

- 1 Suspect Nutrient Deficiency
- 1 Volutella Blight *Volutella pachysandrae*
- 2 Total for Pachysandra**

Palm

- 1 Cultural Problem
- 1 Environmental Stress
- 2 Total for Palm**

Pansy

- 1 Air Pollution
- 2 Black Root Rot *Thielaviopsis basicola*
- 3 Negative for Root Disease
- 1 Pythium Root Rot *Pythium sp.*
- 1 Soluble Salts High
- 8 Total for Pansy**

Pawpaw

- 1 Insufficient Sample
- 1 Total for Pawpaw**

Plant Disease Clinic

Peony

- 2 Botrytis Blight *Botrytis cinerea*
- 1 Cause of Problem Unknown
- 1 Cladosporium Stem and Leaf Blotch *Cladosporium paeoniae*
- 1 Rhizoctonia Rhizome Rot *Rhizoctonia solani*

5 Total for Peony

Periwinkle

- 1 Negative for Disease
- 2 Phoma Dieback *Phoma sp.*
- 1 Phyllosticta Stem Rot *Phyllosticta sp.*
- 1 Phyllosticta Stem Rot and Leaf Spot *Phyllosticta sp.*

5 Total for Periwinkle

Petunia

- 1 Chemical Injury

1 Total for Petunia

Philodendron

- 1 Cultural Problem

1 Total for Philodendron

Phlox

- 1 Cultural Problem
- 1 Insufficient Sample
- 1 Low pH
- 2 Physiological Problem

5 Total for Phlox

Plant, Unknown

- 1 Insufficient Information
- 1 Insufficient Sample

2 Total for Plant, Unknown

Plants, Miscellaneous

- 1 Cause of Problem Unknown
- 1 Environmental Stress
- 1 Insufficient Sample

3 Total for Plants, Miscellaneous

Plumbago

- 1 Chemical Injury

1 Total for Plumbago

Poinsettia

- 1 Pythium Root Rot *Pythium sp.*

1 Total for Poinsettia

Plant Disease Clinic

Poppy

- 1 Environmental Stress
- 1 Total for Poppy**

Privet

- 1 Winter Injury
- 1 Total for Privet**

Rudbeckia

- 1 Insects
- 2 Insufficient Sample
- 3 Total for Rudbeckia**

Schefflera

- 1 Scales
- 1 Total for Schefflera**

Sunflower

- 1 Environmental Stress
- 1 Suspect Chemical Injury
- 2 Total for Sunflower**

Sweet Potato

- 1 Insufficient Sample
- 1 Intumescence
- 2 Total for Sweet Potato**

Tarragon

- 2 Insufficient Sample
- 2 Total for Tarragon**

Toad Lily

- 1 Anthracnose *Colletotrichum sp.*
- 1 Total for Toad Lily**

Tulip

- 1 Basal Rot *Fusarium sp.*
- 1 Blue Mold *Penicillium sp.*
- 1 Gummosis
- 1 Mites
- 4 Total for Tulip**

Verbena

- 1 Negative for Disease
- 1 Spider Mites
- 1 Thrips
- 3 Total for Verbena**

Plant Disease Clinic

Zinnia

- 1 Bacterial Leaf Spot *Xanthomonas campestris pv. zinneae*
- 1 Suspect Physiological Problem
- 2 Total for Zinnia**

Moss

Moss

- 1 Cause of Problem Unknown
- 1 Total for Moss**

Nonplant Material

Mulch

- 1 pH Test
- 1 Saprophytic Fungi
- 2 Total for Mulch**

Plant Disease Clinic

Small Fruits

Blackberry

- 1 Cane Blight *Leptosphaeria coniothyrium*
- 1 Chemical Injury
- 1 Insects
- 1 Negative for Root Disease
- 1 Normal Condition
- 1 Orange Rust *Gymnoconia peckiana*
- 1 Slime Mold
- 1 Suspect Chemical Injury

8 Total for Blackberry

Blueberry

- 1 Cultural Problem
- 1 Girdling Roots
- 2 Insects
- 4 Insufficient Sample
- 1 Physiological Leaf Spot
- 1 Thrips

10 Total for Blueberry

Dewberry

- 1 Mycosphaerella Leaf Spot *Mycosphaerella sp.*

1 Total for Dewberry

Fig

- 1 Cause of Problem Unknown
- 1 Crown Gall *Agrobacterium tumefaciens*
- 1 Physiological Problem

3 Total for Fig

Grape

- 1 Black Rot *Guignardia bidwellii*
- 3 Chemical Injury
- 1 Cultural Problem
- 1 Petri Disease *Phaeomoniella chlamydospora*
- 2 Phomopsis Cane and Leaf Blight *Phomopsis viticola*
- 1 Suspect Chemical Injury
- 1 Zonate Leaf Spot *Cristulariella moricola*

10 Total for Grape

Miscellaneous Brambles

- 1 Raspberry Leaf Spot *Cylindrosporium rubi*

1 Total for Miscellaneous Brambles

Plant Disease Clinic

Raspberry

- 1 Insufficient Sample
- 1 Raspberry Leaf Spot *Cylindrosporium rubi*
- 1 Spur Blight *Didymella applanata*
- 1 Suspect Environmental Stress
- 4 Total for Raspberry**

Strawberry

- 1 Dendrophoma Leaf Blight *Dendrophoma obscurans*
- 1 Environmental Stress
- 1 High pH
- 2 Insufficient Sample
- 1 Low Soluble Salts
- 2 Mites
- 1 Phomopsis Leaf Blight *Phomopsis obscurans*
- 2 Pythium Root Rot *Pythium sp.*
- 1 Rhizoctonia Crown and Root Rot *Rhizoctonia solani*
- 1 Suspect Cultural Problem
- 13 Total for Strawberry**

Plant Disease Clinic

Tree Fruits and Nuts

Apple

6 Cedar-Apple Rust	<i>Gymnosporangium juniperi-virginianae</i>
1 Cedar-Quince Rust	<i>Gymnosporangium clavipes</i>
1 Chemical Injury	
1 Cork Spot	
10 Fire Blight	<i>Erwinia amylovora</i>
2 Fly Speck	<i>Microthyriella rubi</i>
3 Insect	
3 Insects	
4 Insufficient Sample	
1 Necrotic Leaf Blotch	
1 Phomopsis Canker	<i>Phomopsis sp.</i>
1 Plum Curculios	
2 Russetting	
1 Scab	<i>Venturia inaequalis</i>
1 Sooty Blotch	<i>Gloeodes pomigena</i>
1 Suspect Chemical Injury	
1 Suspect Cultural Problem	
1 Suspect Environmental Stress	
1 White Rot	<i>Botryosphaeria dothidea</i>
1 Wood Decay	<i>Irpex lacteus</i>
43 Total for Apple	

Apricot

1 Gummosis	<i>Botryosphaeria sp.</i>
1 Total for Apricot	

Asian Pear

1 Fire Blight	<i>Erwinia amylovora</i>
1 Total for Asian Pear	

Cherry

1 Cercospora Leaf Spot	<i>Cercospora circumscissa</i>
1 Cultural Problem	
2 Insect	
2 Insufficient Sample	
1 Phoma Leaf Spot	<i>Phoma pomorum</i>
1 Webworms	
1 Wood Decay	
9 Total for Cherry	

Chestnut

1 Chestnut Blight	<i>Endothia parasitica</i>
1 Suspect Nutrient Deficiency	
2 Total for Chestnut	

Plant Disease Clinic

Crabapple

1 Cedar-Apple Rust	<i>Gymnosporangium juniperi-virginianae</i>
2 Cedar-Quince Rust	<i>Gymnosporangium clavipes</i>
1 Fire Blight	<i>Erwinia amylovora</i>
1 Insects	
1 Insufficient Sample	
2 Scab	<i>Venturia inaequalis</i>
1 Suspect Fire Blight	<i>Erwinia amylovora</i>
9 Total for Crabapple	

Fruit Trees, Misc.

2 Insufficient Sample	
2 Total for Fruit Trees, Misc.	

Nectarine

1 Ozone Injury	
1 Total for Nectarine	

Peach

4 Brown Rot	<i>Monilinia fructicola</i>
1 Cicada Injury	
1 Cultural Problem	
4 Curculios	
1 Frost Injury	
1 Genetic Abnormality	
1 Healthy	
1 Insects	
4 Insufficient Sample	
1 Oriental Fruit Moths	
3 Peach Leaf Curl	<i>Taphrina deformans</i>
1 Physiological Leaf Spot	
1 Physiological Problem	
2 Scab	<i>Cladosporium carpophilum</i>
1 Scales	
1 Suspect Curculios	
28 Total for Peach	

Pear

1 Curculios	
1 Entomosporium Leaf Spot	<i>Entomosporium mespili</i>
1 Environmental Stress	
3 Fire Blight	<i>Erwinia amylovora</i>
1 Insect	
2 Insufficient Sample	
1 Negative for Disease	
1 Pear Leaf Blister Mites	
11 Total for Pear	

Plant Disease Clinic

Pecan

1 Pops

1 Total for Pecan

Persimmon

1 Anthracnose

Colletotrichum sp.

1 Girdlers

1 Scales

3 Total for Persimmon

Plum

2 Black Knot

Dibotryon morbosum

1 Brown Rot

Monilinia fructicola

1 Gall Insects

1 Insufficient Sample

1 Suspect Curculios

1 Suspect Mechanical Injury

7 Total for Plum

Plant Disease Clinic

Trees

Arborvitae

- 2 Bagworms
 - 1 Cultural Problem
 - 1 Deep Planting
 - 1 Insufficient Sample
 - 1 Kabatina Tip Blight *Kabatina sp.*
 - 1 Low pH
 - 3 Mites
 - 1 Pestalotiopsis Twig Blight *Pestalotiopsis funerea*
- 11 Total for Arborvitae**

Ash

- 1 Anthracnose *Discula sp.*
 - 1 Insect
 - 1 Suspect Cold Injury
- 3 Total for Ash**

Baldcypress

- 1 Insect
 - 1 Pestalotiopsis Twig Blight *Pestalotiopsis sp.*
- 2 Total for Baldcypress**

Beech

- 1 Anthracnose *Gloeosporium sp.*
 - 1 Chemical Injury
 - 1 Environmental Stress
 - 2 Lichens
 - 1 Sooty Mold
- 6 Total for Beech**

Birch

- 1 Cause of Problem Unknown
 - 1 Environmental Stress
 - 1 Insects
 - 2 Insufficient Sample
 - 1 Sooty Mold
 - 1 Suspect Chemical Injury
 - 1 Suspect Virus
- 8 Total for Birch**

Black Gum

- 1 Anthracnose *Colletotrichum sp.*
 - 1 Chemical Injury
 - 1 Insufficient Sample
- 3 Total for Black Gum**

Plant Disease Clinic

Cedar

- 3 Environmental Stress
 - 1 Mites
 - 1 Weevils
- 5 Total for Cedar**

Cherry

- 1 Scorch
- 1 Total for Cherry**

Cryptomeria

- 1 Insufficient Sample
- 1 Total for Cryptomeria**

Cypress

- 1 Bagworm Injury
 - 1 Cause of Problem Unknown
 - 1 Deep Planting
 - 3 Environmental Stress
 - 13 Insufficient Sample
 - 1 Negative for Root Pathogens
 - 7 Pestalotiopsis Tip Blight *Pestalotiopsis sp.*
 - 1 Phytophthora Root Rot *Phytophthora cinnamomi*
 - 1 Rootbound
 - 1 Scales
 - 8 Seiridium Canker *Seiridium unicorne*
 - 2 Suspect Environmental Stress
 - 5 Suspect Seiridium Canker *Seiridium sp.*
- 45 Total for Cypress**

Dogwood

- 1 Botryosphaeria Dieback *Botryosphaeria sp.*
 - 1 Cicada Injury
 - 2 Discula Anthracnose *Discula destructiva*
 - 3 Environmental Stress
 - 1 Frost Injury
 - 1 Girdling Roots
 - 1 Hail Injury
 - 7 Insufficient Sample
 - 2 Negative for Disease
 - 9 Powdery Mildew *Oidium sp.*
 - 1 Scales
 - 2 Scorch
 - 6 Spot Anthracnose *Elsinoe corni*
 - 2 Suspect Chemical Injury
 - 2 Suspect Environmental Stress
 - 1 Suspect Nutrient Deficiency
- 42 Total for Dogwood**

Plant Disease Clinic

Douglasfir

- 1 Environmental Stress
- 1 Swiss Needle Cast *Phaeocryptopus gaeumannii*
- 2 Total for Douglasfir**

Eastern Red Cedar

- 1 Cedar-Apple Rust *Gymnosporangium juniperi-virginianae*
- 1 Insufficient Sample
- 1 Kabatina Tip Blight *Kabatina juniperi*
- 1 Mites
- 1 Negative for Disease
- 1 Phomopsis Tip Blight *Phomopsis juniperovora*
- 1 Spiders
- 7 Total for Eastern Red Cedar**

Elm

- 1 Bacterial Wetwood
- 1 Botryosphaeria Dieback *Botryosphaeria sp.*
- 1 Dutch Elm Disease *Ophiostoma ulmi*
- 1 Mites
- 4 Total for Elm**

Falsecypress

- 1 Insufficient Sample
- 2 Mites
- 1 Negative for Root Disease
- 1 Pestalotiopsis Twig Blight *Pestalotiopsis sp.*
- 5 Total for Falsecypress**

Fir

- 2 Chemical Injury
- 3 Cultural Problem
- 1 Environmental Stress
- 1 Girdling Roots
- 4 Insufficient Sample
- 1 Lichens
- 3 Negative for Root Disease
- 2 Phytophthora Root Rot *Phytophthora cinnamomi*
- 4 Phytophthora Root Rot *Phytophthora sp.*
- 21 Total for Fir**

Giant Sequoia

- 1 Botrytis Blight *Botrytis cinerea*
- 1 Total for Giant Sequoia**

Ginkgo

- 1 Suspect Cultural Problem
- 1 Total for Ginkgo**

Plant Disease Clinic

Hackberry

- 1 Leaf Gall Insects
- 1 Total for Hackberry**

Hawthorn

- 2 Cedar-Quince Rust *Gymnosporangium clavipes*
- 1 Xylaria Root Rot *Xylaria polymorpha*
- 3 Total for Hawthorn**

Hemlock

- 3 Insufficient Sample
- 1 Lichens
- 1 Low pH
- 1 Mites
- 1 Woolly Adelgids
- 7 Total for Hemlock**

Hickory

- 5 Insect Galls
- 5 Total for Hickory**

Honeylocust

- 1 Cercospora Leaf Spot *Cercospora condensata*
- 1 Plant Bugs
- 2 Total for Honeylocust**

Hornbeam

- 1 Secondary Organism *Melanconium sp.*
- 1 Total for Hornbeam**

London Planetree

- 1 Environmental Stress
- 1 Phloeospora Leaf Spot *Phloeospora sp.*
- 2 Total for London Planetree**

Magnolia

- 4 Anthracnose *Colletotrichum sp.*
- 1 Environmental Stress
- 2 Insufficient Sample
- 1 Mites
- 1 Negative for Disease
- 1 Pestalotiopsis Leaf Spot *Pestalotiopsis sp.*
- 1 Physiological Problem
- 1 Powdery Mildew *Oidium sp.*
- 1 Suspect Canker
- 2 Suspect Chemical Injury
- 5 Winter Injury
- 20 Total for Magnolia**

Plant Disease Clinic

Maple

5 Anthracnose	<i>Kabatiella sp.</i>
1 Aphids	
1 Borers	
4 Botryosphaeria Dieback	<i>Botryosphaeria sp.</i>
2 Cause of Problem Unknown	
1 Cerrena unicolor	<i>Cerrena unicolor</i>
1 Cicada Injury	
1 Coniothyrium Leaf Spot	<i>Coniothyrium sp.</i>
1 Cultural Problem	
4 Environmental Stress	
2 Eriophyid Mites	
1 Frost Injury	
1 Insect	
20 Insufficient Sample	
1 Mites	
4 Negative for Verticillium Wilt	
1 Phomopsis Dieback	<i>Phomopsis sp.</i>
3 Purple-eye Leaf Spot	<i>Phyllosticta minima</i>
2 Scales	
2 Scorch	
1 Slime Mold	
1 Suspect Environmental Stress	
1 Suspect Phomopsis Gall	<i>Phomopsis sp.</i>
1 Verticillium Wilt	<i>Verticillium dahliae</i>
1 Wood Decay	
63 Total for Maple	

Oak

1 Anthracnose	<i>Apiognomonina quercina</i>
2 Bacterial Scorch	<i>Xylella fastidiosa</i>
1 Bacterial Wetwood	
1 Botryosphaeria Twig Canker	<i>Botryosphaeria quercuum</i>
2 Chemical Injury	
1 Coryneum Twig Blight	<i>Coryneum sp.</i>
1 Endothia Canker	<i>Endothia gyrosa</i>
4 Environmental Stress	
1 Eriophyid Mites	
1 Gall Insect	
9 Insects	
8 Insufficient Sample	
1 Iron Chlorosis	
1 Leaf Gall Insects	
1 Leafminers	
1 Mites	
1 Negative for Bacterial Leaf Scorch	
1 Negative for Phytophthora	
1 Oak Leaf Blister	<i>Taphrina caerulescens</i>
1 Oak Leaf Button Galls	
1 Phomopsis Canker	<i>Phomopsis sp.</i>
1 Physiological Problem	

Plant Disease Clinic

1 Scales	
1 Sunscald	
1 Suspect Cultural Problem	
1 Suspect Phytophthora Root Rot	<i>Phytophthora cinnamomi</i>
1 Suspect Root Rot	
3 Tubakia Leaf Spot	<i>Tubakia dryina</i>
1 White Rot	
1 Wood Decay	
52 Total for Oak	

Ornamental Cherry

1 Black Knot	<i>Dibotryon morbosum</i>
1 Blossom Blight	<i>Monilinia sp.</i>
2 Botryosphaeria Canker	<i>Botryosphaeria sp.</i>
1 Chemical Injury	
1 Eastern Tent Caterpillars	
7 Insufficient Sample	
1 Negative for Disease	
1 Negative for Root Disease	
1 Phomopsis Canker	<i>Phomopsis sp.</i>
1 Physiological Leaf Spot	
17 Total for Ornamental Cherry	

Ornamental Pear

1 Cedar-Quince Rust	<i>Gymnosporangium clavipes</i>
2 Chemical Injury	
1 Cicada Injury	
4 Fire Blight	<i>Erwinia amylovora</i>
3 Hawthorn Rust	<i>Gymnosporangium globosum</i>
2 Suspect Chemical Injury	
1 Suspect Root Problem	
14 Total for Ornamental Pear	

Paulownia

1 Environmental Stress	
1 Total for Paulownia	

Pine

1 Cause of Problem Unknown	
1 Deep Planting	
4 Diplodia Tip Blight	<i>Diplodia pinea</i>
2 Dothistroma Needle Blight	<i>Dothistroma pini</i>
3 Environmental Stress	
1 Fungal Growth on Medium	
2 Girdling Roots	
1 Insect	
13 Insufficient Sample	
2 Negative for Disease	
1 Negative for Root Disease	
1 Normal Condition	
1 Physiological Problem	

Plant Disease Clinic

1 Pine Tip Moths	
2 Procerum Root Disease	<i>Leptographium procerum</i>
1 Rootbound	
1 Sapsucker Injury	
1 Seasonal Needle Drop	
1 Sooty Mold	
1 Sphaeropsis Canker	<i>Sphaeropsis pinea</i>
3 Suspect Environmental Stress	
1 White Pine Weevils	
45 Total for Pine	

Prunus

1 Black Knot	<i>Dibotryon morbosum</i>
1 Total for Prunus	

Redbud

1 Botryosphaeria Dieback	<i>Botryosphaeria dothidea</i>
1 Insect	
3 Insufficient Sample	
1 Negative for Verticillium	
6 Total for Redbud	

Serviceberry

1 Juniper Broom Rust	<i>Gymnosporangium nidus-avis</i>
1 Scorch	
2 Total for Serviceberry	

Spruce

1 Bagworms	
1 Environmental Stress	
1 Gall Adelgids	
1 Girdling Roots	
1 Insect	
1 Insects	
4 Insufficient Sample	
1 Lichens	
1 Low pH	
7 Mites	
3 Negative for Disease	
1 Physiological Problem	
2 Phytophthora Root Rot	<i>Phytophthora cinnamomi</i>
1 Phytophthora Root Rot	<i>Phytophthora sp.</i>
7 Rhizosphaera Needle Blight	<i>Rhizosphaera kalkhoffii</i>
5 Stigmina Needle Cast	<i>Stigmina lautii</i>
1 Suspect Winter Injury	
1 Web Blight	<i>Rhizoctonia solani</i>
1 White Pine Weevils	
41 Total for Spruce	

Plant Disease Clinic

Sweet Gum

- 1 Scales
- 1 Total for Sweet Gum**

Sycamore

- 2 Anthracnose *Gnomonia platani*
- 2 Total for Sycamore**

Tree, Unknown

- 1 Insufficient Sample
- 1 Suspect Bacterial Wetwood
- 2 Total for Tree, Unknown**

Trees, Miscellaneous

- 3 Insufficient Sample
- 1 Lichens
- 1 Suspect Chemical Injury
- 1 Suspect Environmental Stress
- 6 Total for Trees, Miscellaneous**

Tulip Tree

- 1 Tarspot *Rhytisma sp.*
- 1 Total for Tulip Tree**

Willow

- 1 Cultural Problem
- 1 Fasciation
- 1 Insufficient Sample
- 1 Mites
- 1 Mycosphaerella Leaf Spot *Mycosphaerella sp.*
- 1 Phoma Canker *Phoma sp.*
- 1 Sapsucker Injury
- 7 Total for Willow**

Yellowwood

- 1 Physiological Problem
- 1 Total for Yellowwood**

Plant Disease Clinic

Turf

Bentgrass

1 Algae	
1 Anaerobiosis	
1 Anthracnose	<i>Colletotrichum graminicola</i>
2 Environmental Stress	
1 Lance Nematodes	<i>Hoplolaimus sp.</i>
1 Nematodes	
1 Pythium Blight	<i>Pythium sp.</i>
1 Ring Nematodes	<i>Criconemella sp.</i>
1 Suspect Environmental Stress	
1 Take-all	<i>Gaeumannomyces graminis</i>
1 Yellow Patch	<i>Rhizoctonia cerealis</i>
12 Total for Bentgrass	

Bluegrass

1 Brown Patch	<i>Rhizoctonia solani</i>
2 Environmental Stress	
2 Insufficient Sample	
1 Leptosphaerulina Leaf Blight	<i>Leptosphaerulina sp.</i>
1 Red Thread	<i>Laetisaria fuciformis</i>
1 Slime Mold	
1 Suspect Environmental Stress	
9 Total for Bluegrass	

Centipedegrass

1 Suspect Take-all	<i>Gaeumannomyces graminis</i>
1 Total for Centipedegrass	

Crabgrass

1 Slime Mold	
1 Total for Crabgrass	

Fescue

17 Brown Patch	<i>Rhizoctonia solani</i>
1 Cause of Problem Unknown	
1 Cultural Problem	
2 Environmental Stress	
1 Helminthosporium Blight	<i>Drechslera dictyoides</i>
1 High pH	
8 Insufficient Sample	
3 Negative for Disease	
1 Red Fescue	<i>Festuca rubra</i>
1 Red Thread	<i>Laetisaria fuciformis</i>
1 Rhizoctonia Blight	<i>Rhizoctonia solani</i>
1 Suspect Dog Damage	
1 Weed Encroachment	
1 White Patch	<i>Melanotus philipsii</i>
40 Total for Fescue	

Plant Disease Clinic

Ryegrass

- 1 Dollar Spot *Sclerotinia homeocarpa*
- 1 Environmental Stress
- 2 Total for Ryegrass**

St. Augustinegrass

- 1 Dull Mower Injury
- 1 Gray Leaf Spot *Pyricularia grisea*
- 1 Insufficient Sample
- 3 Total for St. Augustinegrass**

Turfgrass

- 1 Algae
- 4 Brown Patch *Rhizoctonia solani*
- 1 Cultural Problem
- 1 Environmental Stress
- 3 Insufficient Sample
- 1 Low pH
- 1 Melting Out *Drechslera poae*
- 2 Pythium Blight *Pythium sp.*
- 1 Red Thread *Laetisaria fuciformis*
- 2 Slime Mold
- 1 Suspect Cultural Problem
- 18 Total for Turfgrass**

Zoysia

- 1 Normal Leaf Senescence
- 1 Total for Zoysia**

Plant Disease Clinic

Vegetables and Herbs

Basil

- 1 Fusarium Wilt *Fusarium oxysporum*
 - 1 Insufficient Sample
- 2 Total for Basil**

Bean

- 2 Anthracnose *Colletotrichum lindemuthianum*
 - 1 Aschochyta Leaf Spot *Phoma exigua var. exigua*
 - 3 Environmental Stress
 - 1 Fusarium Damping-off *Fusarium oxysporum*
 - 1 Fusarium Root Rot *Fusarium solani*
 - 1 Rhizoctonia Stem and Root Rot *Rhizoctonia solani*
 - 1 Stinkbugs
 - 1 Sunscald
- 11 Total for Bean**

Broccoli

- 1 Club Root *Plasmodiophora brassicae*
 - 1 Insects
- 2 Total for Broccoli**

Cabbage

- 1 Alternaria Leaf Spot *Alternaria brassicicola*
 - 1 Alternaria Leaf Spot *Alternaria sp.*
 - 1 Cabbage Maggot
 - 1 Chemical Injury
 - 1 Maggots
 - 1 Suspect Cultural Problem
- 6 Total for Cabbage**

Cantaloupe

- 1 Air Pollution
- 1 Total for Cantaloupe**

Collards

- 1 Nutrient Deficiency
- 1 Total for Collards**

Cucumber

- 1 Anthracnose *Colletotrichum lagenarium*
 - 1 Downy Mildew *Pseudoperonospora cubensis*
 - 1 Environmental Stress
 - 1 Insufficient Sample
 - 1 Physiological Problem
- 5 Total for Cucumber**

Dill

- 1 Botrytis Blight *Botrytis cinerea*
- 1 Total for Dill**

Plant Disease Clinic

Garlic

- 1 Mechanical Injury
- 1 Mites
- 1 Negative for Nematodes
- 1 Stem and Bulb Nematode *Ditylenchus dipsaci*

4 Total for Garlic

Jerusalem-artichoke

- 1 Insects

1 Total for Jerusalem-artichoke

Kale

- 1 Nutrient Deficiency

1 Total for Kale

Lima Bean

- 1 Anthracnose *Colletotrichum truncatum*

1 Total for Lima Bean

Mint

- 1 Insects

1 Total for Mint

Oregano

- 1 Insects

1 Total for Oregano

Pea

- 1 Insufficient Sample

1 Total for Pea

Pepper

- 2 Blossom End Rot
- 1 Chemical Injury
- 1 Cucumber Mosaic Virus
- 1 Epidermal Separation
- 1 European Corn Borer
- 2 Insect
- 2 Negative for Disease
- 3 Phytophthora Blight *Phytophthora capsici*
- 1 Phytophthora Blight *Phytophthora sp.*
- 1 Suspect Nutrient Deficiency
- 2 Thrips

17 Total for Pepper

Potato

- 1 Black Dot *Colletotrichum atramentarium*
- 2 Blackleg *Erwinia carotovora*
- 4 Common Scab *Streptomyces scabies*
- 1 Enlarged Lenticels

Plant Disease Clinic

- 1 Fusarium Dry Rot *Fusarium sp.*
 - 1 Growth Cracks
 - 1 Insufficient Sample
 - 1 Low pH
 - 1 Negative for Disease
 - 1 Root Knot Nematode *Meloidogyne incognita*
 - 1 Suspect Cultural Problem
 - 2 Wireworms
- 17 Total for Potato**

Rhubarb

- 1 Bacterial Crown and Stem Rot *Erwinia rhapontici*
- 1 Total for Rhubarb**

Rosemary

- 2 Adventitious Roots
 - 1 Pythium Root Rot *Pythium sp.*
- 3 Total for Rosemary**

Sage

- 1 Insects
 - 1 Insufficient Sample
- 2 Total for Sage**

Squash

- 1 Blossom End Rot
 - 1 Chemical Injury
 - 1 Insects
 - 1 Measles
 - 1 Scab *Cladosporium cucumerinum*
 - 1 Suspect Cultural Problem
 - 1 Suspect Environmental Stress
- 7 Total for Squash**

Sweet Corn

- 1 Insects
 - 2 Suspect Chemical Injury
- 3 Total for Sweet Corn**

Sweet Potato

- 1 Fusarium Surface Rot *Fusarium solani*
 - 2 Insects
 - 1 Wireworms
- 4 Total for Sweet Potato**

Thyme

- 1 High pH
- 1 Total for Thyme**

Plant Disease Clinic

Tomato

1 Anthracnose	<i>Colletotrichum coccodes</i>
3 Bacterial Wilt	<i>Ralstonia solanacearum</i>
1 Blotchy Ripening	
1 Botrytis Blight	<i>Botrytis cinerea</i>
11 Chemical Injury	
7 Cultural Problem	
1 Damping-off	<i>Pythium sp.</i>
1 Drought	
1 Early Blight	<i>Alternaria solani</i>
2 Environmental Stress	
1 Excess Soluble Salts	
1 Fusarium Crown and Root Rot	<i>Fusarium oxysporum</i>
1 Graywall	
2 Growth Cracks	
11 Insufficient Sample	
1 Low pH	
1 Mechanical Injury	
1 Mites	
1 Negative for Disease	
1 Negative for Virus	
1 Physiological Leaf Roll	
1 Physiological Problem	
3 Septoria Leaf Spot	<i>Septoria lycopersici</i>
1 Suspect Air Pollution Injury	
3 Suspect Chemical Injury	
2 Suspect Cultural Problem	
1 Suspect Mechanical Injury	
1 Suspect Nutrient Deficiency	
4 Walnut Wilt	
1 Whiteflies	

68 Total for Tomato

Turnip

2 Anthracnose	<i>Colletotrichum sp.</i>
---------------	---------------------------

2 Total for Turnip

Vegetable Garden

1 Referred to Nematology

1 Total for Vegetable Garden

Watermelon

1 Anthracnose	<i>Colletotrichum lagenarium</i>
---------------	----------------------------------

1 Negative for Disease

2 Total for Watermelon

Zucchini

1 Insufficient Sample

1 Total for Zucchini

Plant Disease Clinic

Weeds

Dead Nettle

1 Web Blight *Rhizoctonia solani*

1 Total for Dead Nettle

Woody Ornamentals

Anise Tree

1 Insufficient Sample

1 Total for Anise Tree

Aucuba

1 Botryosphaeria Dieback *Botryosphaeria sp.*

1 Cold Injury

1 Frost Injury

3 Total for Aucuba

Azalea

1 Cement

1 Chemical Residue

7 Insufficient Sample

1 Iron Chlorosis

3 Lacebugs

4 Leaf and Flower Gall

Exobasidium vaccinii

1 Lichens

3 Mites

2 Negative for Disease

1 Nutrient Deficiency

1 Physiological Leaf Spot

1 Rootbound

1 Scales

1 Winter Injury

28 Total for Azalea

Bamboo

1 Insufficient Sample

1 Total for Bamboo

Bayberry

1 Negative for Root Rot

1 Total for Bayberry

Boxwood

2 Cultural Problem

1 Deep Planting

19 English Boxwood Decline

Paecilomyces buxi

6 Environmental Stress

1 Insect

2 Insects

20 Insufficient Sample

Plant Disease Clinic

1 Leafminers	
2 Lesion Nematodes	<i>Pratylenchus sp.</i>
1 Low pH	
6 Mites	
1 Negative for Disease	
1 Negative for Nematodes	
1 Negative for Phytophthora	
1 Negative for Root Disease	
13 Negative for Root Rot Fungi	
8 Nematodes	
1 Physiological Problem	
2 Possible Nematode Problem	
3 Psyllids	
1 Rootbound	
1 Scorch	
1 Spiral Nematodes	<i>Helicotylenchus sp.</i>
4 Spiral Nematodes	<i>Rotylenchus buxophilus</i>
1 Suspect Chemical Injury	
1 Suspect Cultural Problem	
1 Volutella Blight	<i>Volutella buxi</i>
102 Total for Boxwood	

Butterfly Bush

1 Downy Mildew	<i>Peronospora harrotii</i>
1 Insufficient Sample	
1 Mites	
3 Total for Butterfly Bush	

Camellia

1 Anthracnose	<i>Colletotrichum gloeosporioides</i>
1 Cause of Problem Unknown	
3 Environmental Stress	
1 Eriophyid Mites	
1 Insects	
1 Insufficient Sample	
2 Leaf and Flower Gall	<i>Exobasidium camelliae</i>
3 Mites	
2 Negative for Ramorum Blight	
1 Suspect Cold Injury	
3 Winter Injury	
19 Total for Camellia	

Carolina Allspice

1 Anthracnose	<i>Colletotrichum sp.</i>
1 Total for Carolina Allspice	

Cherry Laurel

1 Cultural Problem	
1 Environmental Stress	
1 Insects	

Plant Disease Clinic

4 Insufficient Sample	
1 Mechanical Injury	
1 Mycosphaerella Leaf Spot	<i>Mycosphaerella sp.</i>
2 Phoma Leaf Spot	<i>Phoma sp.</i>
1 Phytophthora Root Rot	<i>Phytophthora cinnamomi</i>
1 Poor Drainage	
13 Total for Cherrylaurel	

Cleyera

1 Environmental Stress
1 Total for Cleyera

Cotoneaster

1 Insufficient Sample
1 Total for Cotoneaster

Crape Myrtle

2 Insufficient Sample
2 Sooty Mold
1 Adequate, Sample and Information
5 Total for Crape Myrtle

Daphne

1 Insufficient Sample
1 Total for Daphne

Elaeagnus

1 Insufficient Sample
1 Total for Elaeagnus

English Ivy

1 Anthracnose	<i>Colletotrichum trichellum</i>
2 Mites	
1 Phytophthora Root Rot	<i>Phytophthora sp.</i>
1 Suspect Environmental Stress	
1 Winter Injury	
6 Total for English Ivy	

Euonymus

1 Crown Gall	<i>Agrobacterium tumefaciens</i>
1 Cultural Problem	
1 Scales	
3 Total for Euonymus	

Forsythia

1 Cause of Problem Unknown
1 Insects
2 Insufficient Sample
4 Total for Forsythia

Plant Disease Clinic

Hibiscus

- 1 Insect
- 1 Negative for Root Disease
- 1 Oedema
- 1 Thrips

4 Total for Hibiscus

Holly

- 1 Anthracnose *Gloeosporium sp.*
- 16 Black Root Rot *Thielaviopsis basicola*
- 1 Cause of Problem Unknown
- 4 Cultural Problem
- 1 Girdling Roots
- 25 Insufficient Sample
- 1 Mites
- 3 Negative for Root Disease
- 1 Normal Leaf Senescence
- 1 Physiological Leaf Spot
- 2 Phytophthora Root Rot *Phytophthora cinnamomi*
- 3 Rust *Chrysomyxa ilicina*
- 1 Sapsucker Injury
- 4 Scales
- 1 Sooty Mold
- 2 Winter Injury

67 Total for Holly

Hydrangea

- 2 Bacterial Leaf Spot *Xanthomonas campestris*
- 1 Cucumber Mosaic Virus
- 1 Frost Injury
- 7 Insufficient Sample
- 1 Negative for Root Disease
- 3 Scorch
- 1 Suspect Chemical Injury
- 1 Suspect Nutrient Deficiency

17 Total for Hydrangea

Hypericum

- 1 Bacterial Leaf Spot *Burkholderia andropogonis*
- 1 Insufficient Sample
- 1 Low pH
- 1 Phytophthora Root Rot *Phytophthora sp.*

4 Total for Hypericum

Indian Hawthorn

- 1 Cold Injury

1 Total for Indian Hawthorn

Plant Disease Clinic

Inkberry

- 1 Algae
- 1 Environmental Stress

2 Total for Inkberry

Japanese Kerria

- 1 Insufficient Sample

1 Total for Japanese Kerria

Japanese Plum Yew

- 1 Cultural Problem
- 1 Insufficient Sample

2 Total for Japanese Plum Yew

Jasmine

- 1 Winter Injury

1 Total for Jasmine

Juniper

- 2 Cultural Problem
- 4 Environmental Stress
- 1 Insects
- 19 Insufficient Sample
- 5 Kabatina Tip Blight
- 2 Low pH
- 10 Mites
- 7 Negative for Disease
- 3 Negative for Root Disease
- 3 Phomopsis Tip Blight
- 1 Phytophthora Root Rot
- 2 Phytophthora Root Rot
- 1 Rootbound
- 1 Severe Pruning
- 1 Suspect Cultural Problem
- 1 Suspect Environmental Stress
- 1 Vole Injury

Kabatina juniperi

Phomopsis juniperovora
Phytophthora cinnamomi
Phytophthora sp.

64 Total for Juniper

Leucothoe

- 1 Deep Planting

1 Total for Leucothoe

Lilac

- 1 Botryosphaeria Dieback
- 1 Chemical Injury
- 1 Scorch
- 1 Suspect Cultural Problem

Botryosphaeria sp.

4 Total for Lilac

Plant Disease Clinic

Mountain Laurel

- 1 Botryosphaeria Dieback *Botryosphaeria sp.*
- 1 Insufficient Sample
- 1 Mycosphaerella Leaf Spot *Mycosphaerella sp.*
- 1 Negative for Ramorum Blight
- 1 Negative for Root Disease
- 1 Scorch
- 6 Total for Mountain Laurel**

Nandina

- 1 Cercospora Leaf Spot *Cercospora nandinae*
- 3 Environmental Stress
- 1 Insufficient Sample
- 1 Low pH
- 1 Poor Drainage
- 7 Total for Nandina**

Perennials, Miscellaneous

- 1 Chemical Injury
- 1 Southern Blight *Sclerotium rolfsii*
- 2 Total for Perennials, Miscellaneous**

Photinia

- 2 Entomosporium Leaf Spot *Entomosporium mespili*
- 1 Insects
- 1 Sapsucker Injury
- 4 Total for Photinia**

Pieris

- 1 Insect
- 2 Insufficient Sample
- 3 Total for Pieris**

Pittosporum

- 1 Insufficient Sample
- 1 Winter Injury
- 2 Total for Pittosporum**

Plants, Miscellaneous

- 1 Insects
- 1 Insufficient Sample
- 1 Lichens
- 1 Plant Bugs
- 4 Total for Plants, Miscellaneous**

Privet

- 3 Environmental Stress
- 1 Physiological Problem
- 4 Total for Privet**

Plant Disease Clinic

Pyracantha

- 1 Insufficient Sample
- 1 Total for Pyracantha**

Rhododendron

- 2 Botryosphaeria Dieback *Botryosphaeria sp.*
- 2 Cercospora Leaf Spot *Cercospora handelii*
- 1 Cultural Problem
- 1 Environmental Stress
- 2 Insects
- 3 Insufficient Sample
- 1 Lacebugs
- 2 Mycosphaerella Leaf Spot *Mycosphaerella sp.*
- 2 Negative for Phytophthora
- 1 Negative for Ramorum Blight
- 1 Negative for Root Disease
- 1 Pestalotia Leaf Spot *Pestalotia sp.*
- 2 Phytophthora Root Rot *Phytophthora cinnamomi*
- 1 Plant Hairs
- 2 Rootbound
- 1 Scorch
- 1 Sunscald
- 26 Total for Rhododendron**

Rose

- 2 Black Spot *Diplocarpon rosae*
- 1 Botrytis Blight *Botrytis cinerea*
- 3 Chemical Injury
- 1 Cultural Problem
- 2 Insects
- 1 Insufficient Sample
- 1 Mites
- 1 Phomopsis Cane Canker *Phomopsis sp.*
- 1 Powdery Mildew *Sphaerotheca pannosa*
- 1 Rose Rosette
- 1 Sooty Mold
- 3 Suspect Rose Rosette
- 1 Suspect Virus
- 19 Total for Rose**

Shaving-brush-tree

- 1 Cultural Problem
- 1 Total for Shaving-brush-tree**

Shrub, Unknown

- 1 Insect
- 1 Total for Shrub, Unknown**

Plant Disease Clinic

Skimmia

- 1 Insufficient Sample
- 1 Total for Skimmia**

Smoke Tree

- 1 Chemical Injury
- 1 Suspect Environmental Stress
- 2 Total for Smoke Tree**

Snowball Bush

- 1 Cultural Problem
- 1 Total for Snowball Bush**

Spirea

- 1 Botryosphaeria Dieback *Botryosphaeria sp.*
- 1 Negative for Root Disease
- 2 Total for Spirea**

Summersweet

- 1 Mites
- 1 Total for Summersweet**

Sweetspire

- 1 Anthracnose *Colletotrichum sp.*
- 1 Mycosphaerella Leaf Spot *Mycosphaerella sp.*
- 2 Total for Sweetspire**

Viburnum

- 1 Botryosphaeria Dieback *Botryosphaeria sp.*
- 1 Botrytis Blight *Botrytis cinerea*
- 1 Giant European Hornets
- 4 Insufficient Sample
- 1 Negative for Disease
- 1 Phoma Dieback *Phoma sp.*
- 9 Total for Viburnum**

Wax Myrtle

- 1 Botryosphaeria Dieback *Botryosphaeria sp.*
- 1 Phyllosticta Leaf Spot *Phyllosticta sp.*
- 2 Total for Wax Myrtle**

Wisteria

- 1 Suspect Cultural Problem
- 1 Total for Wisteria**

Witchhazel

- 2 Phyllosticta Leaf Blight *Phyllosticta hamamelidis*
- 2 Total for Witchhazel**

Plant Disease Clinic

Yew

- 1 Black Vine Weevils
 - 1 High pH
 - 4 Insufficient Sample
 - 1 Negative for Disease
 - 2 Phytophthora Root Rot *Phytophthora cinnamomi*
 - 1 Suspect Winter Injury
- 10 Total for Yew**

Yucca

- 1 Coniothyrium Leaf Spot *Coniothyrium concentricum*
- 1 Total for Yucca**

Plant Disease Clinic

Identification Appendix

Information about samples submitted to the laboratory for identification

Higher Plants (35)

Family: Aceraceae

Acer negundo

Boxelder

Family: Araceae

Acorus calamus

Sweetflag

Family: Asteraceaceae

Tussilago farfara

Colt's-foot

Arnoglossum atriplicifolium

Pale Indian Plantain

Family: Berberidaceae

Mahonia aquifolium

Oregon Grapeholly

Family: Caprifoliaceae

Symphoricarpos orbiculatus

Buck-brush, Devils Shoestring, or Coralberry

Family: Celastraceae

Euonymus europaeus

European Euonymus

Euonymus japonica

Japanese Euonymus

Family: Ceratophyllaceae

Ceratophyllum demersum

Coontail

Family: Ericaceae

Vaccinium stamineum

Deerberry

Family: Euphorbiaceae

Euphorbia heterophylla

Spurge

Family: Juglandaceae

Carya cordiformis

Bitternut Hickory

Carya sp.

Hickory

Family: Oleaceae

Fraxinus pennsylvanica

Green Ash

Family: Onagraceae

Ludwigia paulaustris

Marsh Purslane

Oenothera biennis complex

Common Evening Primrose

Family: Phytolaccaceae

Gladiolus gandavensis

Gladiolus

Plant Disease Clinic

Family: Poaceae

<i>Andropogon virginicus</i>	Broomsedge
<i>Digitaria sanguinalis</i>	Large Crabgrass
<i>Eleusine indica</i>	Goosegrass
<i>Festuca arundinacea</i>	Tall Fescue
<i>Festuca sp.</i>	Fine Fescue
<i>Lolium multiflorum</i>	Italian Ryegrass
<i>Microstegium vineium</i>	Japanese Stiltgrass
<i>Muhlenbergia schreberi</i>	Nimbleweed

Family: Polygonaceae

<i>Polygonum cuspidatum</i>	Japanese Knotweed
<i>Polygonum sp.</i>	Knotweed

Family: Ranunculaceae

<i>Clematis sp.</i>	Clematis
---------------------	----------

Family: Rosaceae

<i>Pyrus calleryana</i>	Bradford Pear Hybrid
<i>Pyrus communis (2)</i>	Common Pear
<i>Rubus argutus</i>	Common Blackberry

Family: Solanaceae

<i>Lycium chinense</i>	Matrimony Vine
------------------------	----------------

Family: Tamaricaceae

<i>Tamarix sp.</i>	Tamarisk
--------------------	----------

Family: Verbenaceae

<i>Clerodendron trichotomum</i>	Glory Bower
---------------------------------	-------------

Fungi (9)

<i>Omphalotus olearius</i>	Jack-o-Lantern Mushroom
<i>Scleroderma geaster (2)</i>	Earthball
<i>Phallus impudicus</i>	Stinkhorn
<i>Lepiota procera</i>	Parasol Mushroom
<i>Astraeus sp.</i>	Earthstar
<i>Polyporus sulphureus</i>	Polyporus
Unidentified Genus	Unidentified Fungus
<i>Stereum sp.</i>	Parchment Fungus

All Others (3)

Unknown Substance (2)
Negative for Alsike Clover